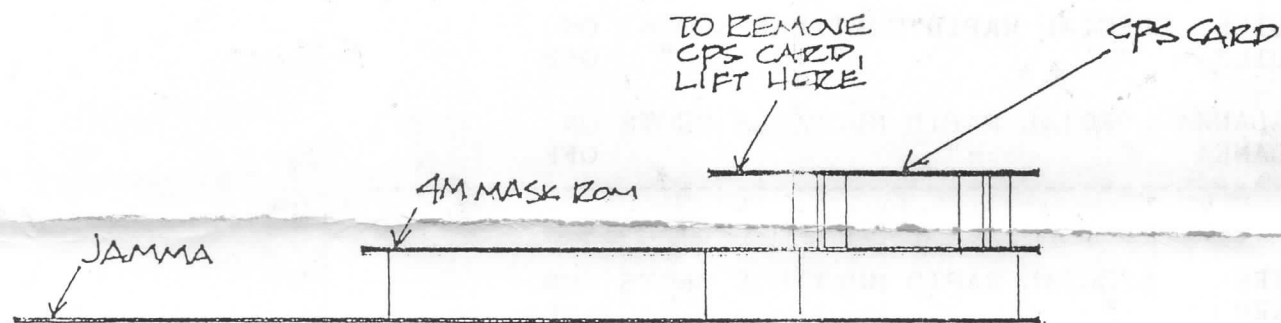


AS VIEWED FROM ABOVE



AS VIEWED ON EDGE

Installation of "THE ACCELERATOR" PART 2 in Champion Edition S.F.II

- 1) Disconnect the power cord and remove the board set.
- 2) Remove the small top board by lifting up on the edge, as shown above.
- 3) Carefully remove the original chips OBSERVING the index NOTCH.
- 4) Insert the new "ACCELERATOR" part 2 chips in locations 20, 21, 22, 23 & 11D. CAUTION OBSERVE the direction of the index NOTCH.
- 5) Replace the small top board.
- 6) Reinstall the board set and reconnect the power cord.
- 7) Return the \$25.00 rebate certificate and undamaged original chip set to:
TESTRON, Inc., Route 28 (P.O. Box 1000) Arkville, New York 12406

Champion Edition Street Fighter II is a registered trademark of Capcom, USA Inc
The Accelerator and Super New are trademarks of TESTRON, Inc 1992

Copyright 1992 TESTRON, Inc.

(OVER)

DIP SWITCH SETTINGS FOR THE ACCELERATOR PART 2
 + = new settings ** = recommended settings

DIP A	DIP B	DIP C
+	+++++	++
12345678	12345678	12345678

all other settings are still factory stock

DIP A
 #8 OFF - Directional shots curve up or down
 ** #8 ON - 3D Wave shots slow-med-fast

DIP B					
#4	#5	#6	Speed	-loop counter	
OFF	OFF	OFF	EXTREMELY FAST	30	
ON	OFF	ON		70	
OFF	ON	OFF		90	
** ON	ON	OFF		150	
OFF	ON	ON		190	
ON	OFF	ON		230	
ON	ON	ON	SLOWEST	310	
OFF	ON	ON	SPEED TEST MODE	001	

#7 ON GUILLE SPECIAL RAPID MULTIPLE SHOTS ON
 #7 OFF GUILLE " " " " OFF

** #8 ON BALANKA SPECIAL RAPID MULTIPLE SHOTS ON
 #8 OFF BLANKA " " " " OFF

DIP C

#1 ON KEN	SPECIAL RAPID MULTIPLE SHOTS	ON
#1 OFF KEN	" " " "	OFF
#2 ON RYU	SPECIAL RAPID MULTIPLE SHOTS	ON
#2 OFF RYU	" " " "	OFF

WE SUGGEST CHANGING THE "SPECIAL RAPID MULTIPLE SHOTS" FEATURE ON A RANDOM BASIS. BUT NEVER TURNING ON MORE THEN 1 AT ANY ONE TIME, AS THIS FEATURE WILL PROLONG THE GAME TIME.